

The Manhattan Regatta - 2014

Organizing Authority (OA) – J/105 Class Fleet 10

Sailing Instructions

1. RULES

- 1.1 The regatta will be governed by the rules as defined in *The Racing Rules of Sailing* (RRS), including the US SAILING prescriptions, and *The J/105 Class Rules* (CR), with the exception of provisions under 1.2. For the PHRF divisions, the current PHRF Regulations administered by the PHRF-MA
- 1.2 For the J105 Class, RRS rule 87, CR 7.1 amended in the sailing instructions to allow for one junior crew.
 - a. Junior crew shall be defined as a crew member under the age 15 whose weight shall not be included in overall crew weight limit.
- 1.3 USCG approved personal flotation devices (PFD) shall be worn at all times. This changes RRS rule 40.
- 1.4 Should there be a conflict between the sailing instructions and the Notice of Race (NOR), the sailing instructions will take precedence. This changes RRS rule 63.7.

2. NOTICES TO COMPETITORS

- 2.1. Notices to competitors will be posted on the event website:
<http://www.yachtscoring.com/emenue.cfm?eID=858>
- 2.2. Copies of the SI's will be available on the Liberty Landing Marina (LLM) Lightship.

3. CHANGES TO SAILING INSTRUCTIONS

- 3.1. Any change to the sailing instructions will be posted on the event website before 0900 on the day it will take effect.
- 3.2. Any change to the schedule of races will be posted on the event website before 2000 on the day before it will take effect.
- 3.3. The Race Committee (RC) may make changes to these sailing instructions verbally on the water via VHF Ch 69, at its sole discretion.

4. SIGNALS MADE ASHORE

- 4.1. Signals made ashore will be displayed at the Lightship at Liberty Landing Marina , NJ
- 4.2. When flag AP is displayed ashore, '1 minute' is replaced with 'not less than one hour' in the race signal AP description. This changes RRS Signals

5. SCHEDULE OF EVENTS

Saturday, May 17

- 1030 Skippers meeting – Aboard deck of LLM Lightship
- 1225 Warning signal for the first race

Approx. 1hr after finish of last race BBQ at LLM Lightship

Sunday, May 18

- 1025 Warning signal for the first race

Approx. 1hr after finish of last race Awards aboard LLM Lightship

- 5.1 It is the intention of the RC to run as many races as possible. Code Flag 'A' displayed either at or soon after the finish indicates that there will be no further racing that day. Also, it is the RC's intention not to have a warning signal after 1705 on Saturday or 1500 on Sunday.

6. CLASS FLAGS

- 6.1 The class flag for the J/105s will be the #1 pennant.
- 6.2 The class flag for the PHRF's will be a #2 pennant.

7. RACING AREA

- 7.1 Appendix 1 shows the approximate location of the racing area and start areas.
- 7.2 Races will be held in Upper Hudson Bay. The Upper Hudson Bay is a commercial and recreational area; there will be ferries, barges, tugboats and other commercial and recreational vessels transiting the area.
- 7.3 The RC will be located on a motor yacht near the Statue of Liberty .

8. THE COURSES

- 8.1 The course to be sailed will be posted by the Race Committee no later than the warning signal.
- 8.2 The courses may be windward-leeward utilizing inflatable drop marks, or preset courses using government marks. The government mark courses and mark descriptions are listed in SI Appendix 2. An example of a windward leeward course is diagramed in SI Appendix 3. For windward-leeward courses, the number of legs to be sailed, the distance and the bearing to the first mark will be posted. For the government marks courses, the Race Committee will post a "G" and a number corresponding to the Course number. Courses will also be announced via VHF radio on channel 69.8.2
- 8.3 For windward-leeward courses, all marks shall be rounded to port.

9. MARKS

- 9.0. For the windward-leeward courses, rounding marks will be yellow inflatable buoys. For the government mark courses, marks will be government aids to navigation buoys whose locations are indicated on the attached course chart.
- 9.1. The starting and finishing mark will be the course mark near the RC boat. (a yellow or yellow/black inflatable buoy) The yellow start/finish mark may also be the leeward rounding mark.

10. THE START

- 10.0. The starting line will be between a staff displaying an orange flag by the race committee and the course side of the starting mark, except for Saturday's first race whereas the starting line will be between two orange tetrahedrons.
- 10.1. A boat starting later than 5 minutes after her starting signal will be scored DNS. This changes RRS A4 and A5.

11. RECALLS

- 11.0. The race committee may courtesy hail boats identified as on the course side at the start by sail number or boat name on VHF CH 68. Any actions of the RC with respect to such courtesy hails is not a basis for redress. This changes RRS 62.1(a).

12. CHANGE OF THE NEXT LEG OF THE COURSE

- 12.0. To change the next leg of the course, the race committee may lay a new mark (or move the finishing line) and remove the original mark as soon as practicable. If there is a course change that requires a new mark, that new mark will be a yellow & back inflatable ball buoy. When in a subsequent change a new mark is replaced, it will be replaced by an original mark.

13. THE FINISH

- 13.0. The finishing line will be between a staff displaying an orange flag by the RC and the course side of the finishing mark.

14. PENALTY SYSTEM

- 14.0. Rule 44.1 is changed so that the Two-Turns Penalty is replaced by the One-Turn Penalty unless the incident occurs in the Zone in which case the Two-Turn Penalty applies.

15. TIME LIMITS

- 15.0. Time limit for each race will be two hours.
- 15.1. Boats failing to finish within 30 minutes after the first boat sails the course in accordance with RRS 28, and finishes will be scored DNF without a hearing. This changes RRS 35, 63.1, A4 and A5.

16. PROTESTS AND REQUESTS FOR REDRESS

- 16.0. Protest forms are available at the LLM light ship on Saturday and the Floating Classroom at the North Cove on Sunday. Protests and requests for redress or reopening shall be delivered at their respective locations within the appropriate time limit.
- 16.1. Protest hearings will be held after each day of racing, at the LLM lightship on Saturday and Sunday. Parties to a protest should report to the either location for further directions to the protest committee.
- 16.2. It is the responsibility of the parties to ensure that their witnesses are available when called to testify. If witnesses are not in the vicinity of the protest committee area when called, they may not be heard.
- 16.3. Notices of protests by the race committee or protest committee will be posted to inform boats under rule 61.1(b) on the official notice board.
- 16.4. On the last day of the regatta, rules 66, 62.2, and the US SAILING prescription to rule 62.2 are changed such that a request for reopening a hearing or a request for redress based an action or omission of the jury shall be delivered within the protest filing deadline if the requesting party was informed of the decision the previous day; no later than 30 minutes after the requesting party was informed of the decision on that day; or no later than 30 minutes after a signal to abandon racing is displayed ashore.
- 16.5. Intention to protest for a rule of Part 2 and the boat being protested shall be signaled to the Race Committee on the VHF Channel 69 at the finish of a race, until acknowledged by the Race Committee. This modifies rule 61.1(a).
- 16.6. The protest time limit in rule 61.3 is 30 minutes after the Race Committee Signal Boat docks. Notices will be posted to inform competitors of protest hearings in which they are parties as soon as possible after the protest time limit. Hearings will be held as soon as possible, approximately in the order received. Location and times will be posted.
- 16.7. Boats may not protest other boats for breaches of: retirement from race notification, safety equipment. The penalty for breaking these rules is at the discretion of the Protest Committee and may be less than disqualification. This changes rule 60.1(a).

17. SCORING

- 17.0. The scoring system will be the Low Point System and each boat's regatta score will be the total of that boat's scores in all the races. There will be no excluded races. This changes RRS A2.
- 17.1. One race will constitute a series.

18. SAFETY REGULATIONS

- 18.0. USCG approved personal flotation devices (PFD) shall be worn by all crew aboard at all times.
- 18.1. Any boat withdrawing before the start or retiring from a race shall notify the race committee as soon as possible on VHF channel 69.

- 18.2. Security Zones – The USCG has established a 150-yard security zone around Ellis and Liberty Islands as shown in Appendix 4. Additionally there is a 100-yard security zone around all US Naval or Coast Guard vessels. These security zones are considered obstructions on the racecourse and no boat is allowed to sail inside the security zones. If on station, security Zones are marked with white buoys with orange bands and diamonds.
- 18.3. Weather Protocols – In accordance with the USCG Marine Event Permit, there may be no racing if the wind gusts to speeds greater than 25 knots, there is lightning, thunderstorms or visibility is less than 1 nautical mile. A race may be postponed or abandoned if any of these conditions exist. If a race is abandoned for weather, teams will be notified via VHF Ch 69 and may be directed to proceed to the berthing areas.
- 18.4. Boats interacting in NY Harbor with vessels not racing are cautioned to observe the [USCG Commandant Instruction M16672.2D, Navigation Rules](#) and to yield right of way to vessels restricted in their ability to maneuver, especially to tugs, ferries, and barges. Any boat observed to impede such traffic will receive a DSQ.

19. REPLACEMENT OF EQUIPMENT

- 19.0. Substitution or repair of damaged or lost equipment must comply with or conform to the class rules.

20. ADVERTISING

- 20.0. Pursuant to CR 2.8 and ISAF Regulation 20, ISAF Advertising Code, including ISAF Regulation 20.5.6(a), no advertising shall be permitted on boats.

21. HAUL-OUT RESTRICTIONS

- 21.0. All boats shall be launched by 1700 hours on May 16, 2014 and must remain in the water through the end of the regatta. Boats shall not be hauled out during the regatta except with and according to the terms of prior written permission of the protest committee, after consultation with the J/105 Class Association Fleet 10 Measurer or his designee.

22. RADIO COMMUNICATION

- 22.0. Each boat shall carry a radio capable of transmitting and receiving on VHF channels 9, 13, 16, and 68. Except in an emergency, a boat shall neither make radio transmissions while racing nor receive radio communications not available to all boats. This restriction also applies to mobile telephones. Courtesy broadcasts to the fleet will be on VHF channel 68.
- 22.1. The courtesy broadcast channel may be changed on the water. Multiple courtesy broadcasts on VHF channel 68 stating the change to the new channel will be made prior to the change.
- 22.2. Assistance from Race Committee - The Race Committee may respond to any questions from sailors even after the race has started and any such answers from the race

committee will not be considered outside assistance. Any RC answers are not grounds for protest or redress.

23. PRIZES

- 23.0. Regatta prizes will be awarded to the top 3 boats for the J105 class and top 2 boats for the PHRF divisions.
- 23.1. Prizes will be awarded at the Lightship at Liberty landing Marina, after the conclusion of racing on Sunday, May 18.

24. DISCLAIMER OF LIABILITY

- 24.1 Competitors participate in the regatta entirely at their own risk. See rule 4, of the RRS Decision to Race. The organizing authority will not accept any liability for material damage or personal injury or death sustained in conjunction with or prior to, during, or after the regatta.

David Spence– Regatta Committee Co-Chair

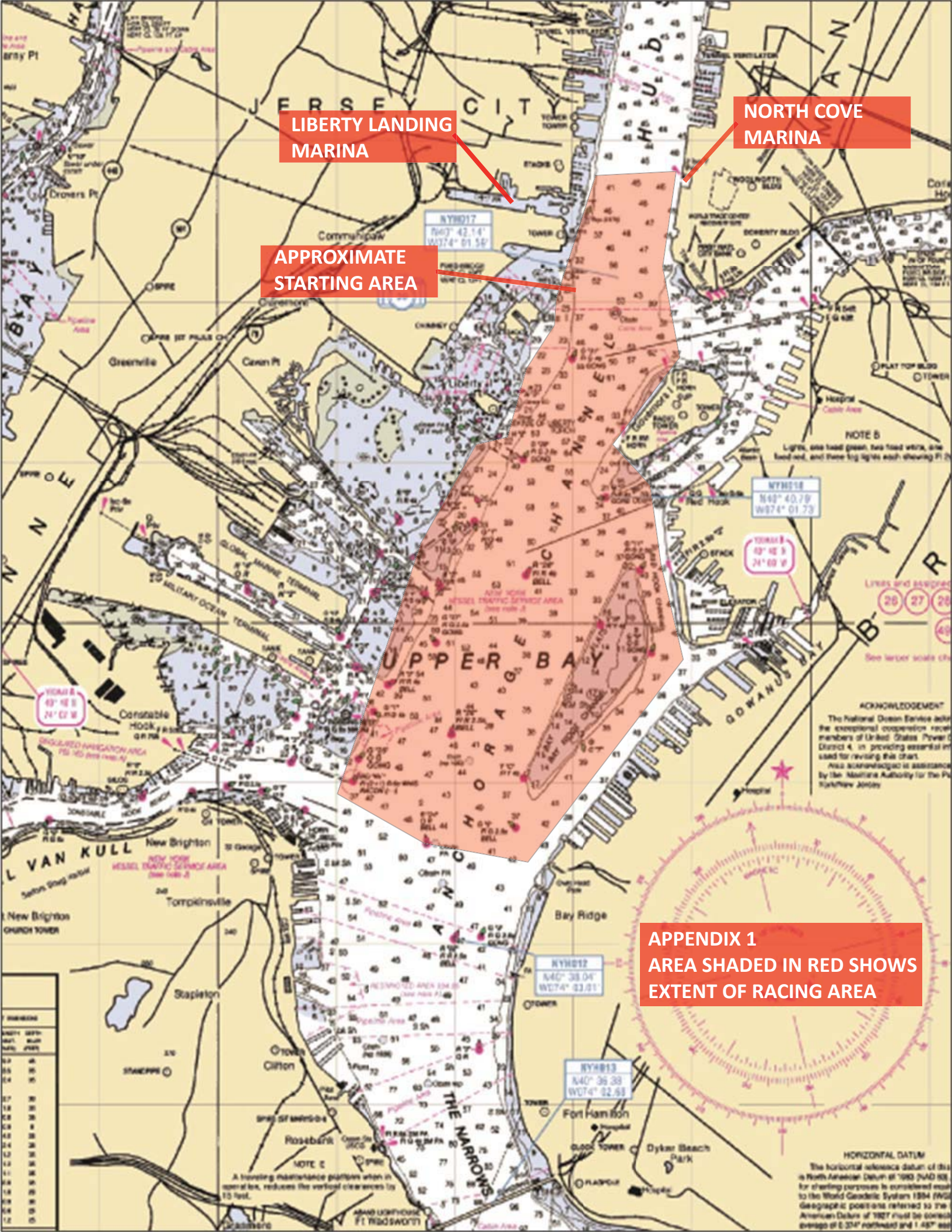
Paul Zajac – Regatta Committee Co-Chair

Vicki Jo Neiner – Event Principal Race Officer

Abbreviations used:

CR	Class rules
DNS	Did Not Start
ISAF	International Sailing Federation
LLM	Liberty Landing Marina
PFD	Personal Flotation Device
RC	Race Committee
RRS	Racing Rules of Sailing
SI	Sailing Instruction
USCG	United States Coast Guard
WW	The Honorable William Wall (floating clubhouse)

See attached appendices 1-4.



LIBERTY LANDING MARINA

NORTH COVE MARINA

APPROXIMATE STARTING AREA

APPENDIX 1
AREA SHADED IN RED SHOWS
EXTENT OF RACING AREA

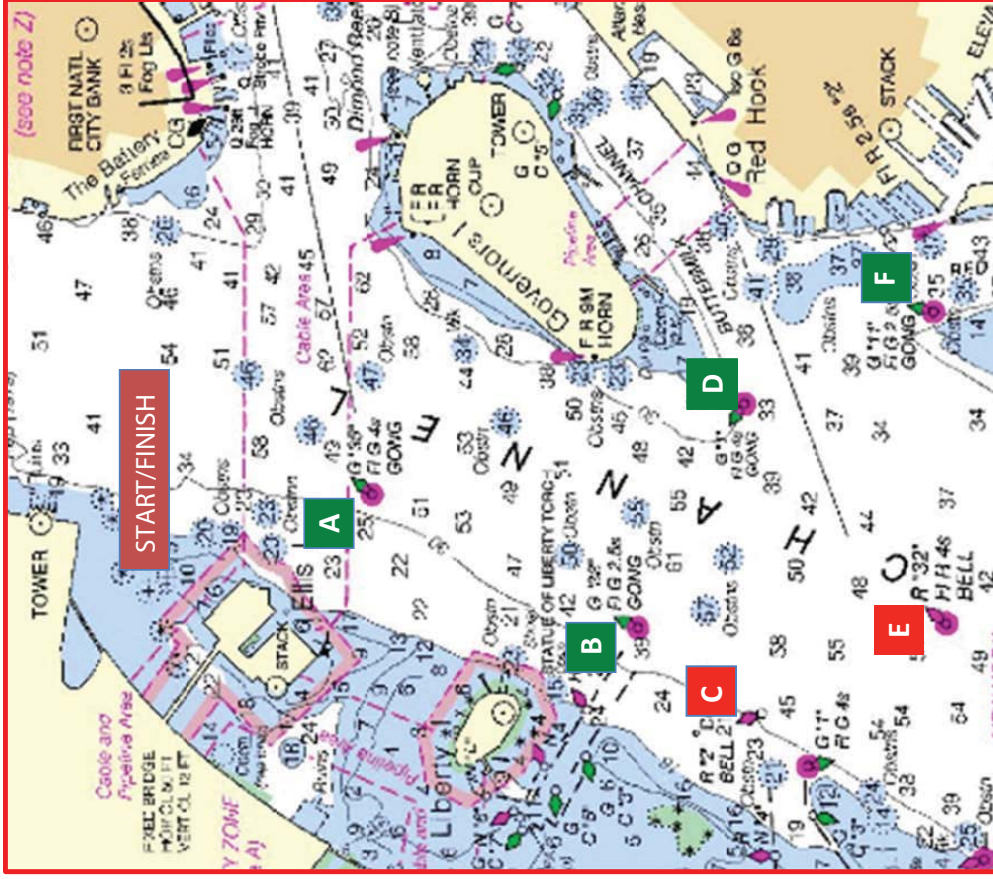
SOUNDINGS	
DEPTH	FAHRENHEIT
0.0	32
0.5	33
1.0	34
1.5	35
2.0	36
2.5	37
3.0	38
3.5	39
4.0	40
4.5	41
5.0	42
5.5	43
6.0	44
6.5	45
7.0	46
7.5	47
8.0	48
8.5	49
9.0	50
9.5	51
10.0	52

NOTE C
A sounding shall be taken when in normal use, reduced to the vertical clearance by 15 feet.

ACKNOWLEDGEMENT
The National Ocean Service acknowledges the exceptional cooperation received from members of United States Power District 4, in providing essential material for revising this chart.
This nautical chart is published by the Hydrographic Office, United States Coast and Geodetic Survey, Washington, D.C. 20540.
See notice to mariners for the latest information.

HORIZONTAL DATUM
The horizontal reference datum of this chart is North American Datum of 1983 (NAD 83). For charting purposes it is considered equal to the World Geodetic System 1984 (WGS 84) geographic positions referred to the American Datum of 1983 must be corrected through the use of 0.224' northward and 1.487' westward.

Appendix 2 – Manhattan Regatta Course Sheet - Government Marks



Course #	1st mark	2nd mark	3rd mark	4th mark	5th mark	6th mark	Distance (nm)
1	Bp	Finish					2.2
2	Dp	Finish					2.8
3	Bp	Ap	Bp	Finish			3.7
4	Dp	Ap	Dp	Finish			4.6
5	Bp	Ap	Bp	Ap	Bp	Finish	5.0
6	Bp	Fp	Finish				4.1
7	Cp	Dp	Finish				3.7
8	Bp	Fs	Bs	Finish			4.2
9	Cp	Ds	Cs	Finish			4.5
10	Ds	Cp	Dp	Finish			4.5
11	Fs	Fp	Fp	Finish			5.8
12	Bp	Fp	Bp	Fp	Finish		6.0
13	Cp	Dp	Cp	Dp	Finish		5.5
14	Ds	Cs	Ds	Cs	Finish		5.4
15	Fs	Bs	Fs	Bs	Finish		6.0
16	Cp	Dp	Ap	Bp	Finish		5.0
17	Ds	Cs	As	Bs	Finish		5.1
18	Cp	Dp	Ap	Cp	Dp	Finish	6.5
19	Ds	Cs	As	Ds	Cs	Finish	6.5
20	Special Course announced by Race Committee via VHF radio						
21	As	Finish					1.2
22	Ep	Finish					3.8
23	Fp	Finish					3.8
24	Bp	Dp	Finish				3.2
25	Ds	Bs	Finish				3.2
26	Ds	Cs	Finish				3.8

Key to Marks

Start/Finish"
Orange flag on
RC Yacht & Yellow
Ball

A - G "35"
FIG 4s GONG

D - G "1"
FIG 4s GONG

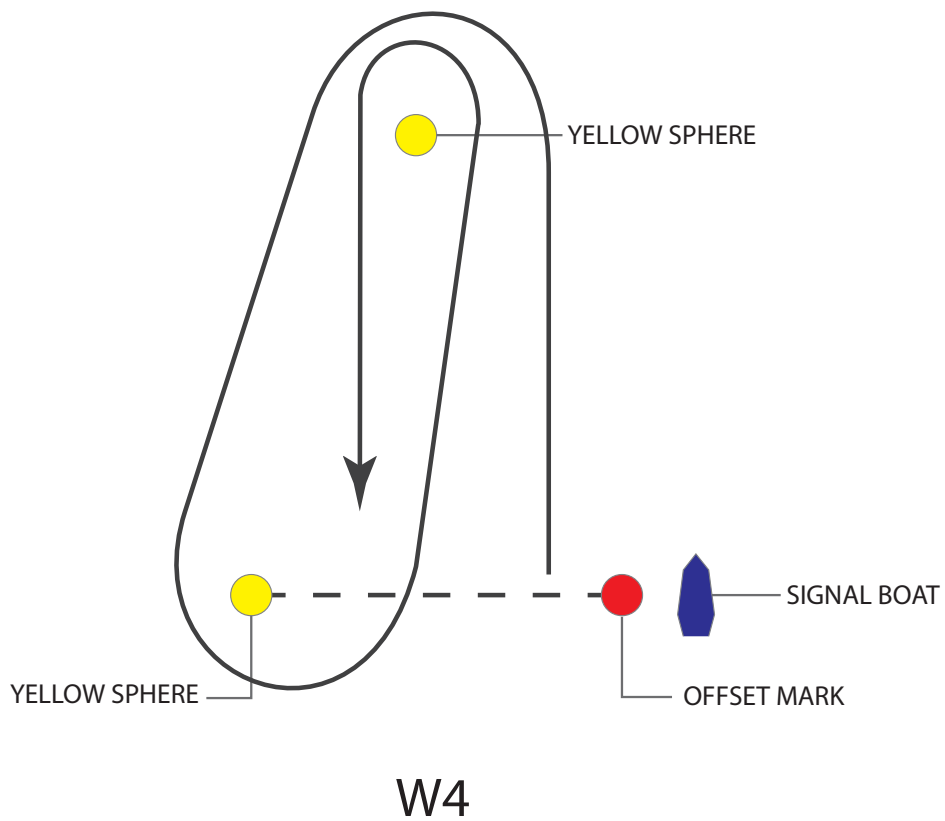
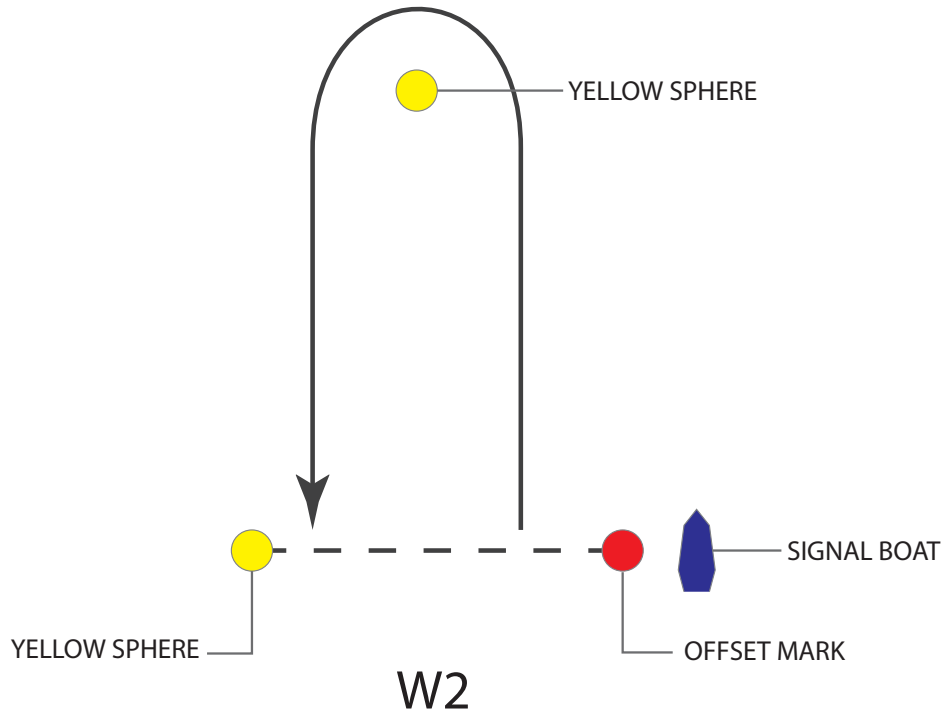
B - G "33"
FIG 2.5s GONG

E - R "32"
FIG 2.5s BELL

C - R "2"
BELL

F - G "11"
FIG 2.5s GONG

Appendix 3 – Windward/Leeward Courses - Manhattan Regatta



NOTE: Signal boat may be the WW (floating clubhouse) or motor yacht.

Appendix 4 - Approximate Security Zones around Statue of Liberty and Ellis Island



line of security zones